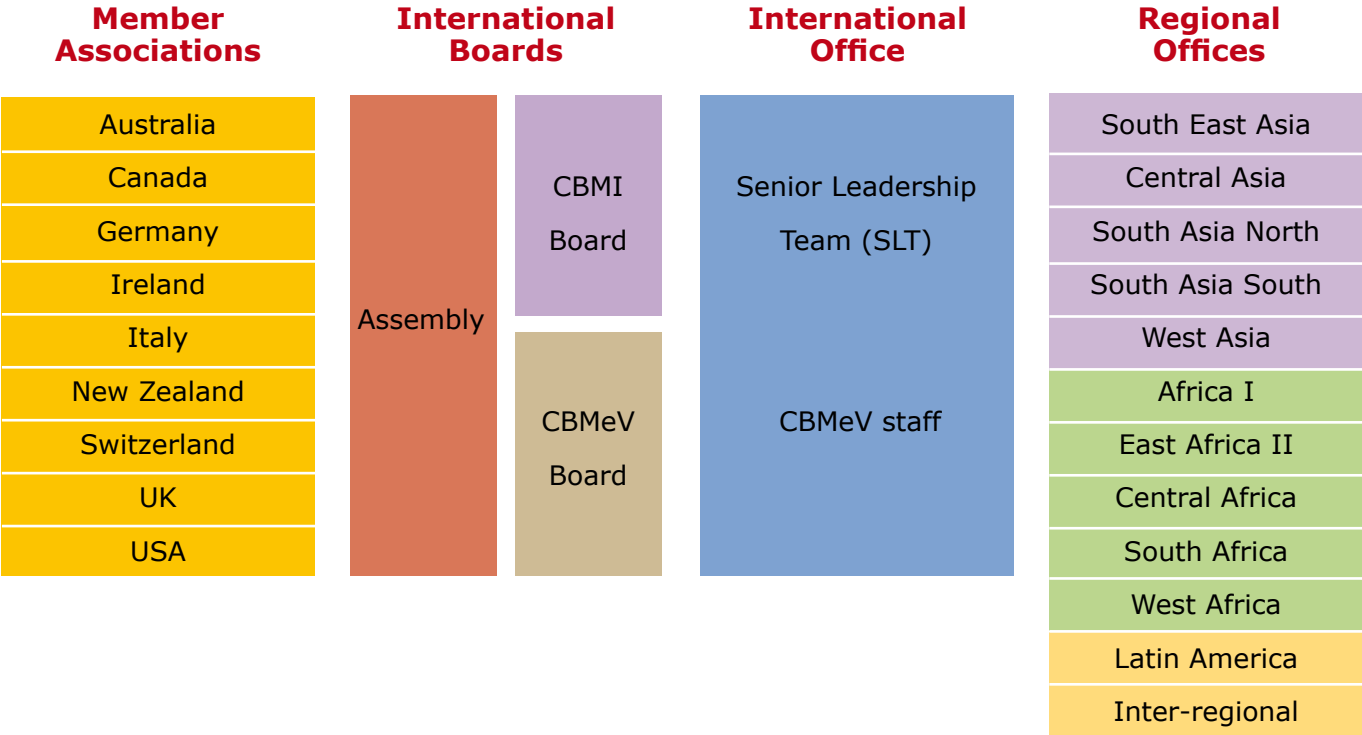


CBM International Structure



CBM has nine Member Associations. They work together in one joint overseas programme managed by CBMeV. They also work together to promote resource mobilisation for the CBM Family through CBMI. The CBM Assembly of Members is made up of representatives of the nine Member Associations, who appoint the CBMeV and CBMI Boards. The CBMeV and CBMI Boards advise and supervise the Senior Leadership Team (SLT). The Senior Leadership Team manages CBMeV and CBMI (the International Office). The Extended Leadership Team consists of the SLT, National Directors of the Member Associations and Regional Directors of the Regional Offices.

CBM International Management CBMeV/CBMI Activities

The CBM Assemblies of Members are made up of representatives of the nine Member Associations.

The CBM Boards are appointed by the Assemblies. They supervise and advise the Senior Leadership Team.

The President is a member of the CBM Boards and is responsible for the overall management of CBMeV and CBMI.

Assembly of Members
Board of Directors
President Allen Foster

VP Fundraising Pierre-Bernard Le Bas	VP Human Resources Ruediger Wenzel	Director of Finance & Corp. Dev. Markus Hesse	VP Programme Development Matthias Spaeth	VP Inclusive Development Vacant
Support and Research to MAs	HR Mgt. Tools	Finance	Research & Policy	ID AWG
Brand Management	Training/ Development	Process Control & Monitoring	Programme Planning	EU Liaison Office
International Fundraising	Recruitment	Organisational Development	Programme Coordination	WHO Alliances
Communication & Public Relations & CBM website	Advisory & HR Services	Business services	Regional Offices	GTZ Liaison Post

CBM Member Associations 2009



CBM Australia

National Director: John Jeffries
P.O. Box 348
56 Rutland Road
Box Hill
Victoria, 3128
AUSTRALIA
www.cbm.org.au

CBM Canada

National Director: Ed Epp
P.O. Box 800
3844 Stouffville Road
Stouffville, Ontario L4A 7Z9
CANADA
www.cbmcanada.org

CBM Germany

Director: Reinhold Behr
Nibelungenstrasse 124
D – 64625 Bensheim
GERMANY
www.cbm.de

CBM Ireland

National Director: David McAllister
M:TEK Building
Knockaconny
Monaghan
County Monaghan
IRELAND
www.cbm.ie

CBM Italy

National Director: Luciano Miotto
Missioni Cristiane per i ciechi nel mondo
ONLUS
Piazza Santa Maria Beltrade, 2
I – 20123 Milano
ITALY
www.cbmit.org

CBM New Zealand

National Director: Darren Ward
112 Bush Road
P.O. Box 303477
North Harbour
North Shore 0751
NEW ZEALAND
www.cbm-nz.org.nz

CBM Switzerland

Nat. Director: Hansjörg Baltensperger
Postfach 154 (Seestrasse 160)
CH-8027 Zürich
SWITZERLAND
www.cbmswiss.ch

CBM UK

National Director: Bill McAllister
Vision House
7/8 Oakington Business Park
Dry Drayton Road
Oakington,
Cambridge, CB24 3DQ
UNITED KINGDOM
www.cbmuk.org.uk

CBM USA

National Director: Ron Nabors
P.O. Box 19000
450 East Park Avenue
Greenville, SC 29601
USA
www.cbmus.org

CBM Regional Offices in Asia



Regional Director

Mr. Rainer Guetler
seapro@cbmseapro.org

Address

**CBM South East Asia and
Pacific Regional Office
Unit 604,
Alabang Business Tower,
1216 Acacia Avenue,
Madrigal Business Park
Alabang, Muntinlupa City
1780
PHILIPPINES**

Countries

**Indonesia, Malaysia,
Philippines, Pacific
Islands**

Mr. Tom van Herwijnen
cbmcearo@cbm.or.th

**CBM Central East Asia
Regional Office
37 Inthamara Soi 7,
Suthisarn Road,
Bangkok – 10400
THAILAND**

**Cambodia, China,
Laos, Mongolia,
Myanmar, Thailand,
Vietnam**

Ms. Guna Fernandez
mail@cbmsaros.org

**CBM South Asia
Regional Office – South
No. 140, Commerce Cube,
2nd Floor, 5th Main,
Puttannachetty Road,
Chamrajpet, Bangalore -
560 018 INDIA**

**India South,
Sri Lanka**

Ms. Silvana Inselmann
mail@cbmsaron.org

**CBM South Asia
Regional Office – North
No. 140, Commerce Cube,
3rd Floor, 5th Main,
Puttannachetty Road,
Chamrajpet, Bangalore -
560 018 INDIA**

**India North,
Bangladesh, Nepal**

Ms. Tanja Kern
wanaeu@cbm.org

**CBM Regional Office for
West Asia, Northern Africa
and Europe (WANAEU)
Nibelungenstrasse 124,
64625 Bensheim
GERMANY**

**Afghanistan, Gaza,
Iran, Iraq, Israel,
Jordan, Lebanon,
Pakistan, Syria, Pale-
stine (West Bank and
Gaza), Yemen, Egypt,
Morocco**

CBM Regional Offices in Africa



Regional Director

Mr. David McComiskey
aros@cbmsa.org

Address

**CBM Regional Office for Southern Africa
P.O. Box 5294,
Tygervalley 7536,
Cape Town
SOUTH AFRICA**

Countries

Angola, Botswana, Lesotho, Madagascar, Malawi, Mauritius, Mozambique, Namibia, South Africa, Swaziland, Zambia, Zimbabwe.

Mr. Rudolf Cziki
info@cbmi-nbo.org

**CBM Regional Office for Central Africa
P.O. Box 58004,
Ring Road Westlands,
Next to Nakumatt Ukay Center
00200 Nairobi
KENYA**

Burundi, Cameroon, Central African Republic, Chad, Congo, DR Congo, Equatorial Guinea, Gabon, Rwanda, Sao Tomé.

Mr. Carl Becker
carl_becker@cbm-arow.org

**CBM West Africa Regional Office
B.P. 13489,
Rue des Mercuriales,
Lomé
TOGO**

Benin, Burkina Faso, Gambia, Ghana, Guinea, Guinea-Bissau, Ivory Coast, Liberia, Mali, Niger, Nigeria, Senegal, Sierra Leone, Togo.

Ms. Anita Smeets
info@cbmi-nbo.org

**CBM Regional Office for East Africa I
P.O. Box 58004,
Ring Road Westlands,
Next to Nakumatt Ukay Center
00200 Nairobi
KENYA**

Kenya, Tanzania, Uganda.

Mr. Edmund Gabriel
cbm.roe2@ethionet.et

**CBM Regional Office for East Africa II
Yeka Sub-City, Kebele 21,
House No. 266,
P.O. Box 694,
Addis Ababa
ETHIOPIA**

Djibouti, Eritrea, Ethiopia, Somalia, Sudan.

CBM Regional Offices in Latin America and Europe



Regional Director

Dr. Martin Ruppenthal
cbmlaro@cbm-laro.org

Address

**CBM Regional Office for South America
Casilla 17-17-1822,
Quito
ECUADOR**

Countries

Argentina, Bolivia, Brazil, Chile, Colombia, Ecuador, Guyana, Paraguay, Peru, Uruguay, Venezuela, Mexico, Guatemala, Belize, Honduras, El Salvador, Nicaragua, Costa Rica, Cuba, Dominican Republic, Haiti, Caribbean Islands

Ms. Birgit Kuchta
wanaeu@cbm.org

**CBM Regional Office for West Asia, Northern Africa and Europe (WANAEU)
Nibelungenstrasse 124
64625 Bensheim
GERMANY**

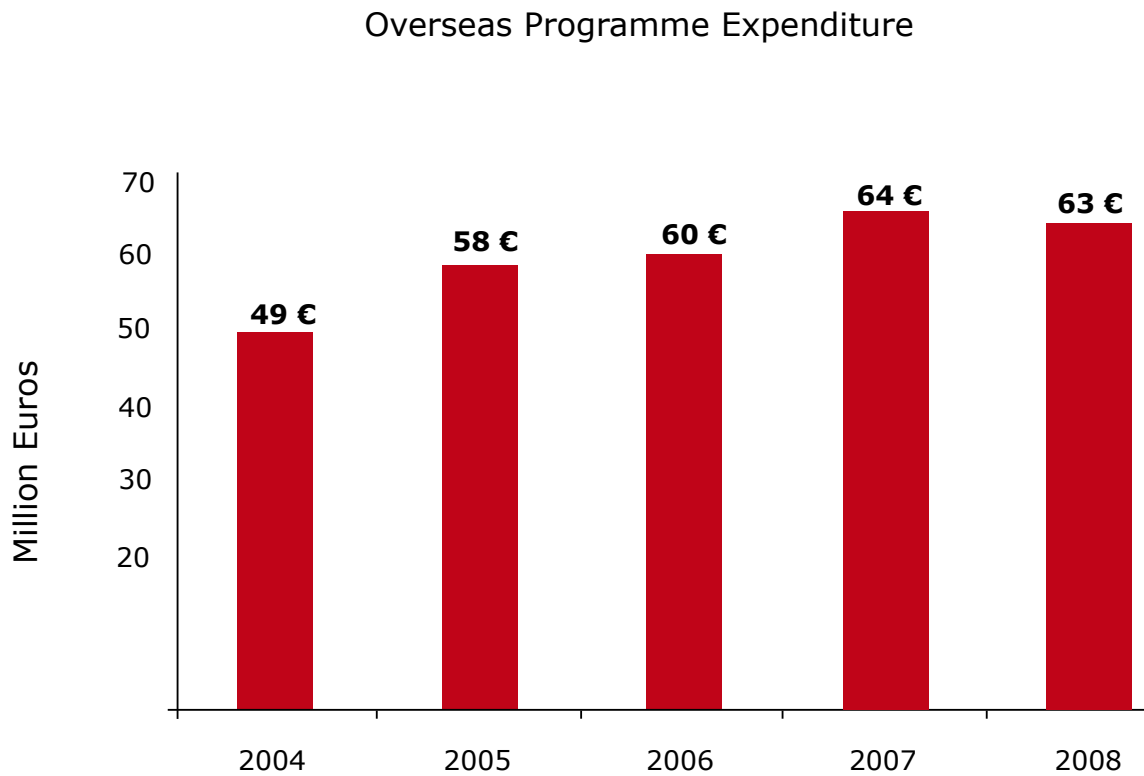
Azerbaijan, Belarus, Bosnia-Herzegovina, Bulgaria, Croatia, Czech Republic, Latvia, Lithuania, Moldova, Poland, Russia, Tajikistan, Ukraine

Ms. Monika Brenes
wanaeu@cbm.org

**CBM Regional Office for West Asia, Northern Africa and Europe (WANAEU)
Nibelungenstrasse 124
64625 Bensheim
GERMANY**

Inter-regional Projects

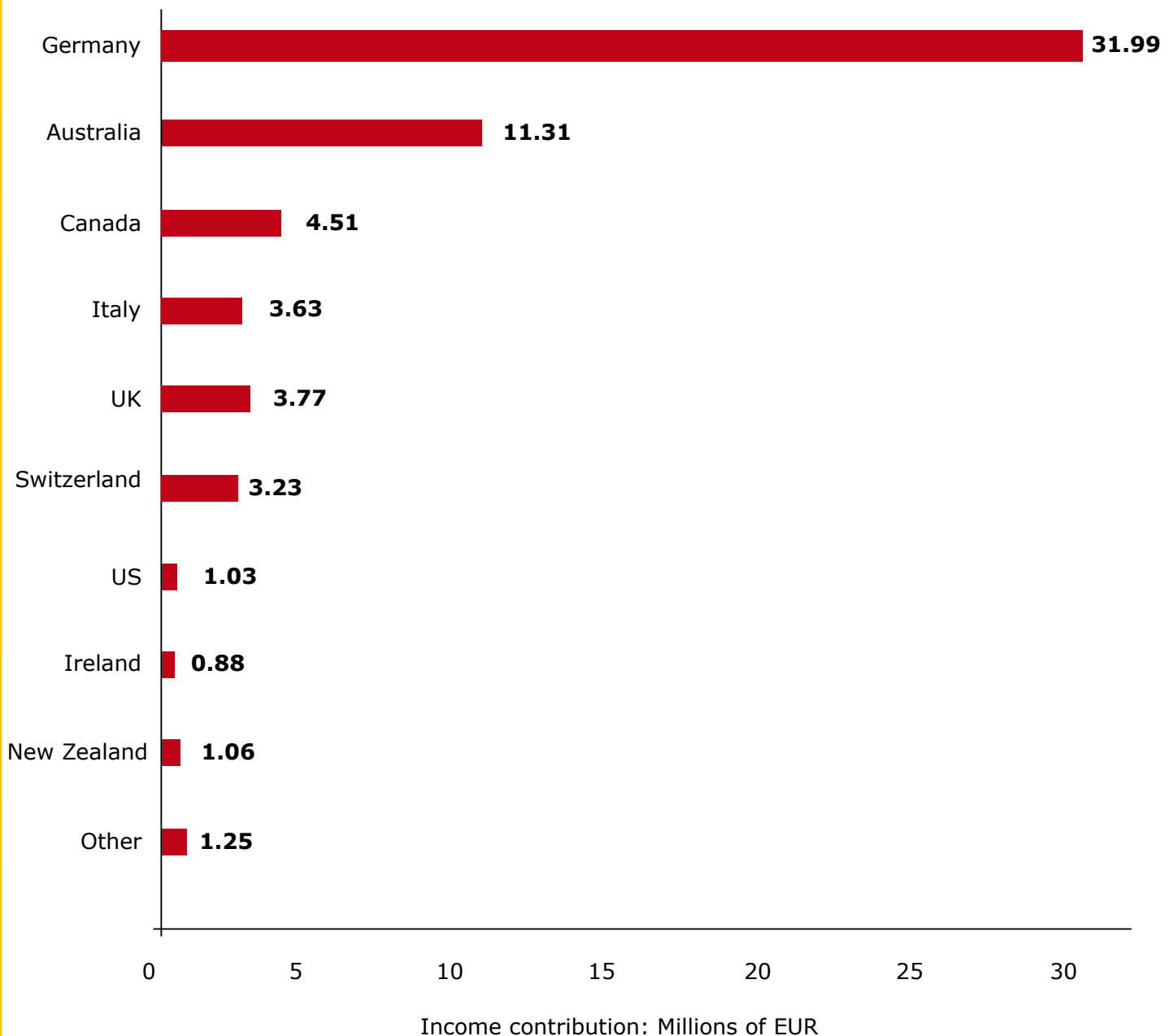
Trends in Programme Expenditure



There is a 30 % increase in total overseas programme expenditure in middle and low income countries between 2004 and 2008.

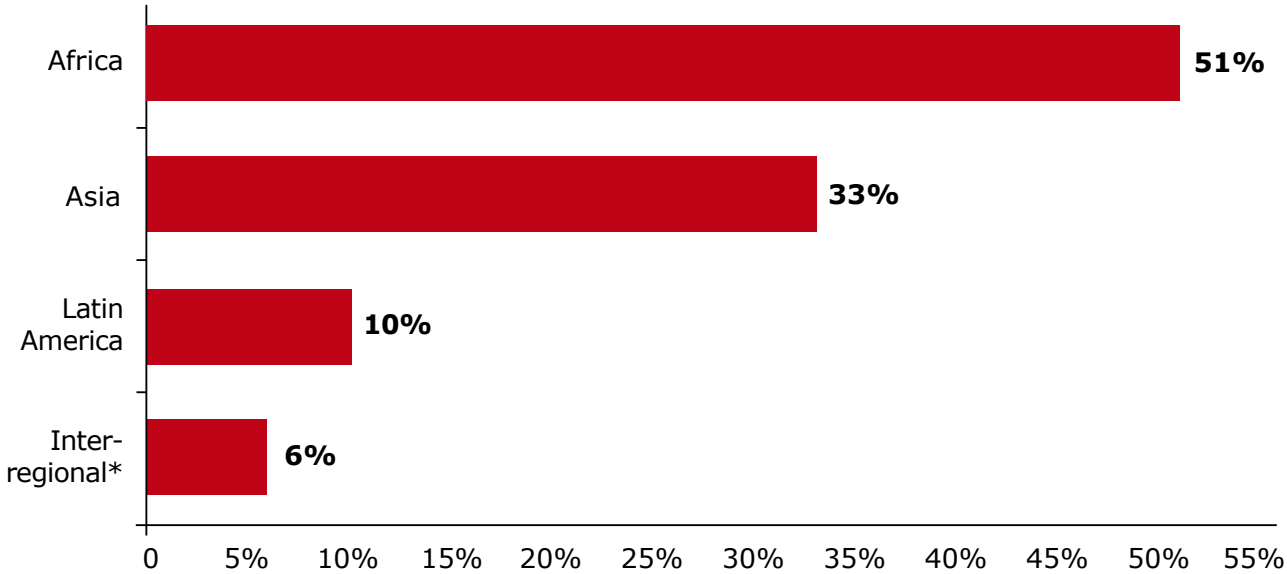
CBM Member Associations Programme Expenditure

Overseas Programme Expenditure 2008 by Member Association



Nine CBM Member Associations participate together in a joint programme to improve services (healthcare, educational and rehabilitation) and to promote the inclusion of persons with disabilities.

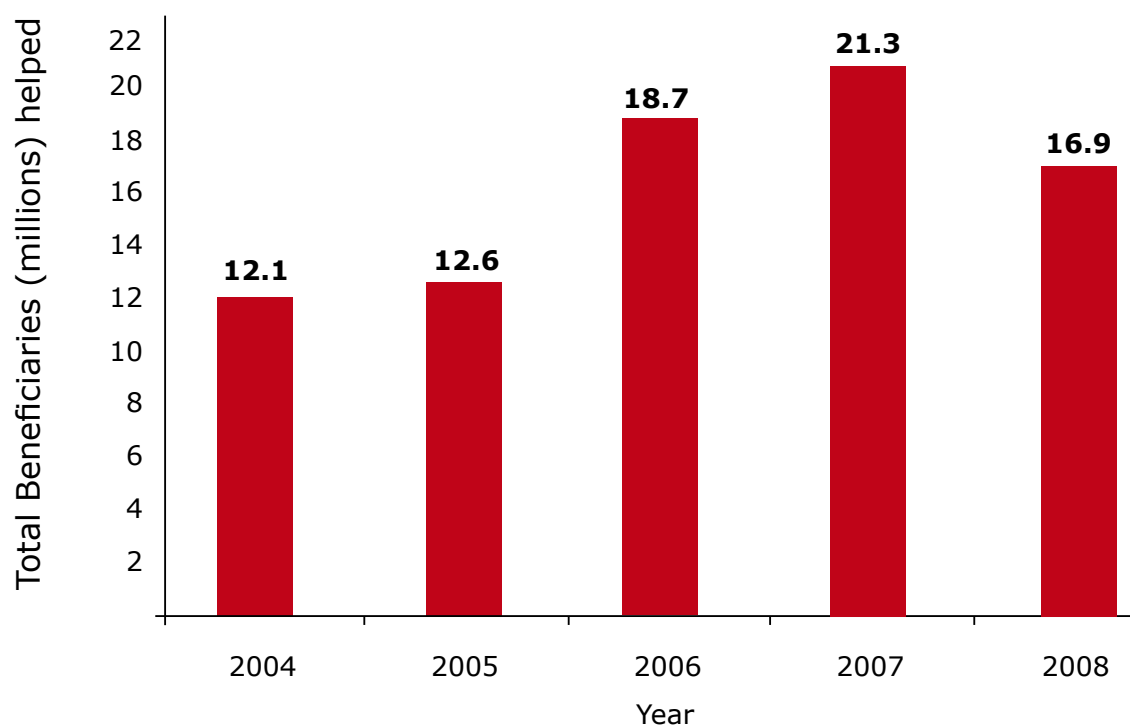
Expenditure of CBM programme work by continent



* including Europe 0.5%

51% of CBM total programme expenditure takes place in Africa.

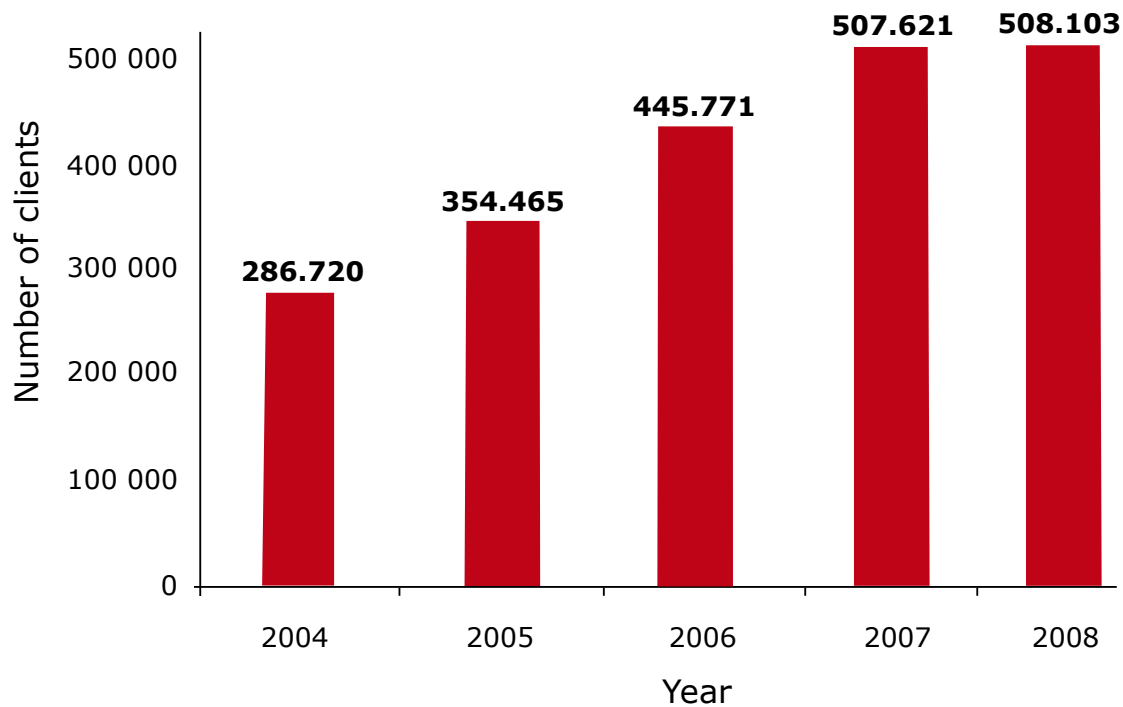
Trends in total CBM beneficiaries



The increase in total beneficiaries from 2005-7 is mainly due to an expansion in community programmes to distribute Mectizan to persons at risk of blindness from onchocerciasis.

The reduction from 21.3m in 2007 to 16.9m in 2008 is partly due to an improved method of data collection and analysis.

Trends in education and rehabilitation for children and adults

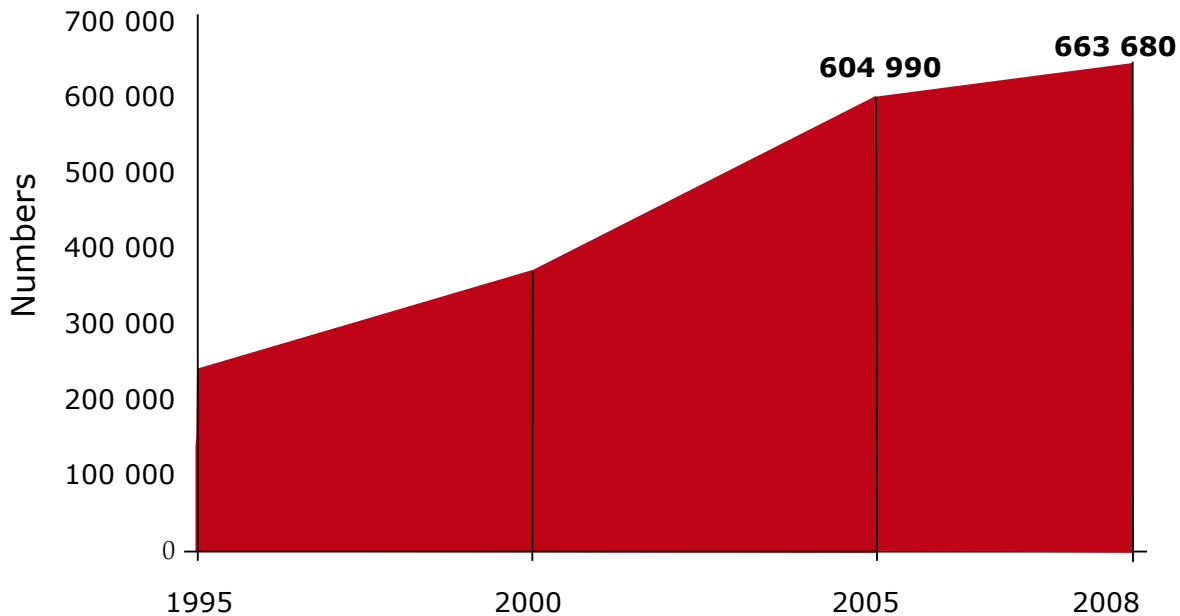


CBM and its partner organisations provided education and rehabilitation services to a total of 508,103 clients in 2008.

Education and rehabilitation services were provided by 515 CBM partner projects.

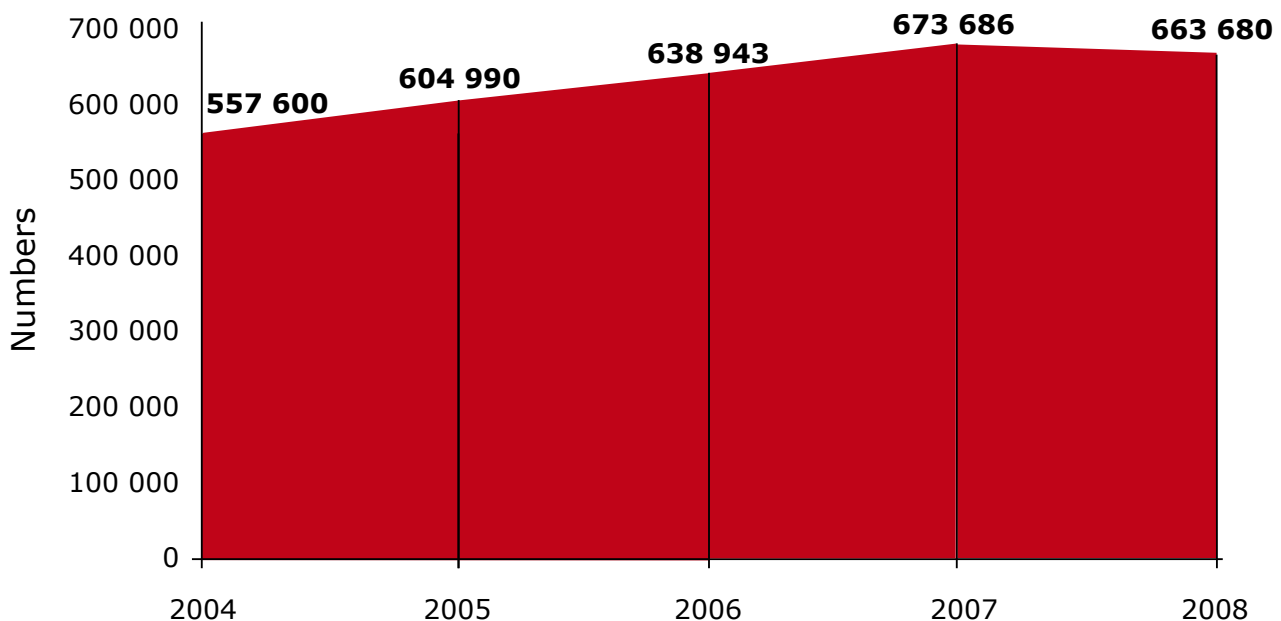
Trends in cataract operation numbers

Cataract Operations 1995-2008



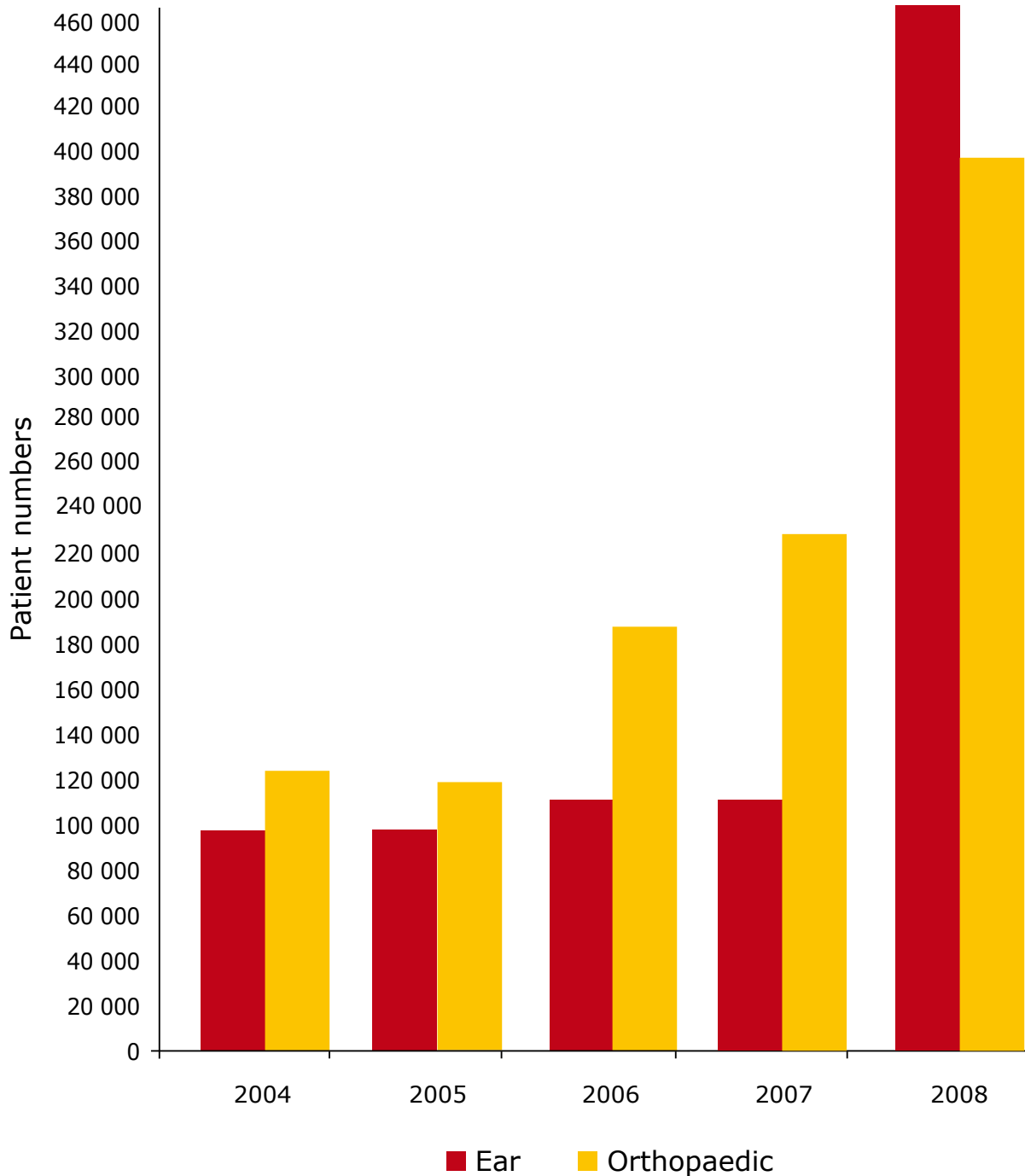
During the last 12 years the number of cataract surgeries performed by CBM-supported partners has increased more than 2.5 times from 250,000 to 663,680.

Cataract Operations – 5 Year Trend



Overall the number of cataract operations performed by CBM-supported partners has increased in the last 5 years from 557,600 in 2004 to 663,680 in 2008.

Trends in ear & orthopaedic patients



During the last five years, CBM's partner organisations have increased the number of ear patients from app. 100,000 to 464,585, and the number of orthopaedic patients from app. 120,000 to 393,417.